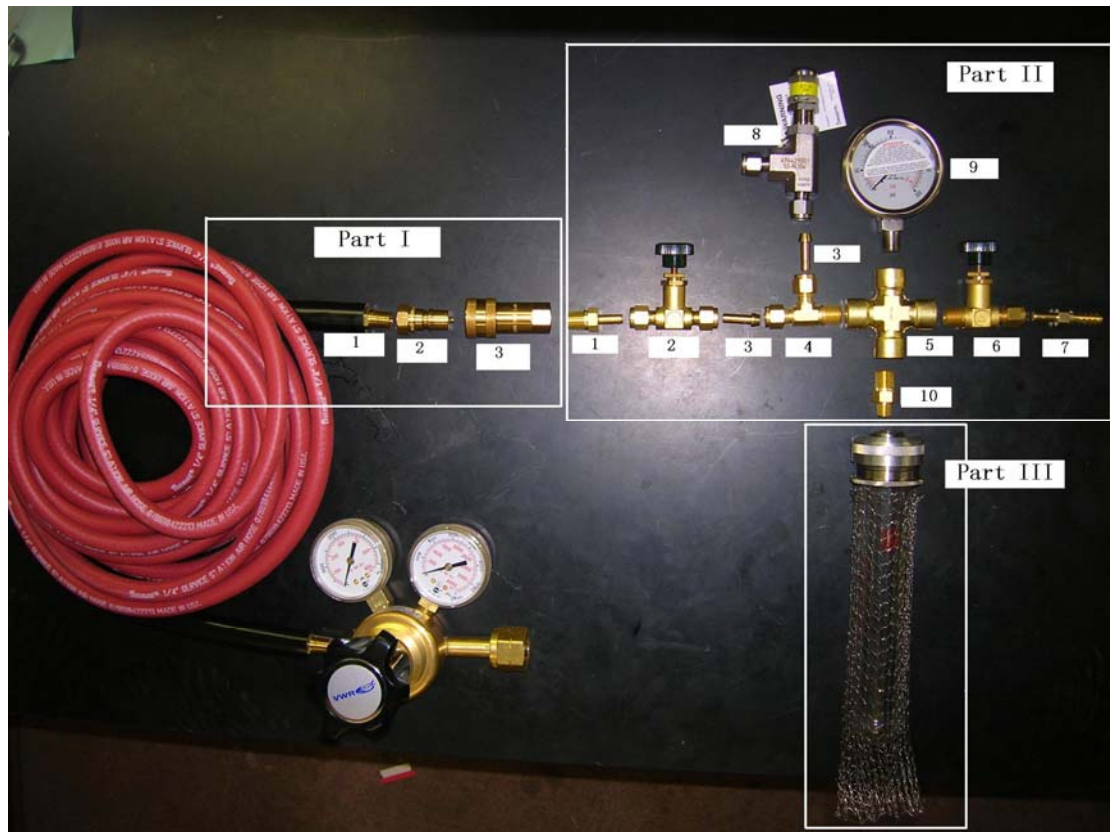


Fisher-Porter-Bottle

-----Ordering Guide and Introduction

by Yi Shu, updated: April 27th, 2008

As the following picture shows, a Fisher-Porter-Bottle contains three major parts. They are ordered from different companies.



Place the order:

Part I:

This part is ordered from Imperial Supplies LLC. The website of this company is:
<http://www.imperialsupplies.com/>

The order number of each item is as following:

- 1: 95930
- 2: 97473
- 3: 97472

Part II:

This part is ordered from North Houston Valve & Fitting Co. The website of this

company is:

http://www.swagelok.com/SYN/EN/3937/about_us_detail_template.aspx?dcode=NHSTN

The order number of each item is:

- 1: B-4-TA-1-4
- 2: B-4JN
- 3: B-401-PC
- 4: B-400-3-4TMT
- 5: B-4-CS
- 6: B-4JN1
- 7: B-4-HC-A-401
- 8: SS-RL3S4
- 9: PGI-63C-PG300-LAO1
- 10: B-4-HRN-2

Part III:

This part is ordered from Andrews Glass Co.. The website of this company is:
<http://www.andrewsglass.com/>

In order to see the details of this part, let's have a look at this picture:



The order number of each item is as following:

1 & 2 & 3: 110108 0003

4: 110551 0003

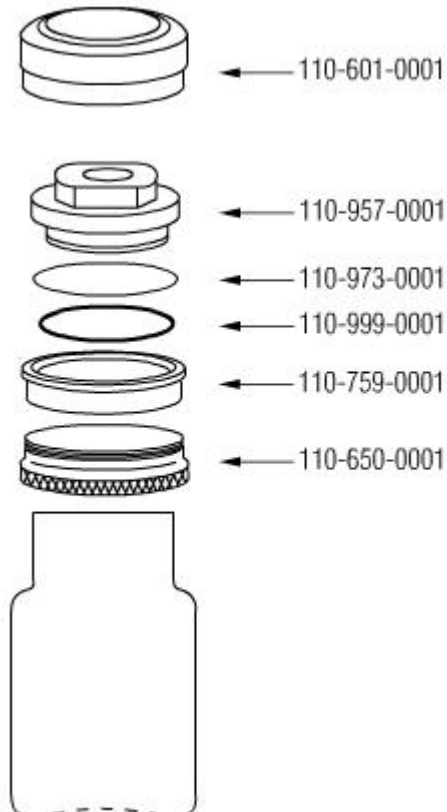
If you want order them separately, you can follow the following:

1: 110585 001

2: 110957 001

3: 110452 0003

And the details about 1 & 2 are as following:



(For more details, please check the following link:

http://www.andrews-glass.com/pages/prv_assembly.tpl?cart=12092463828217)

Also, there are three options of 3:

1. 3oz. Order number: 110452 0003. The highest pressure it can stand is 225psi

2. 6oz. Order number: 110452 0006. The highest pressure it can stand is 100psi

3. 12oz. Order number: 110452 0012. The highest pressure it can stand is 75psi.

At the same time, if you want to order different size of the bottle, you should order different mesh protector. (6oz: 110551 0006; 12oz: 110551 0012)

Process of connecting all items:

First, as the picture showing, connect SS-RL3S4, two B-401-PC, B-400-3-4TMT,

B-4JN, B-4-TA-1-4.

Tips here:

1. Pay great attention the way you connecting B-4JN. You should consider the direction of gas's entering and outgoing according to the introduction on it.
2. When use B-401-PC, if you connect the other part with the bigger terminal, first throw away the two parts in the nut screw, then screw the nut by hand until you can't do it anymore. Then use tool to screw it for about one quarter circle; if you connect the other part with the smaller terminal, put it into the hole directly and screw the nut screw by hand until you can't. Then use tool to screw it for about five quarters. It doesn't matter which side you use to connect which part.

Second, test and adjust the safety valve: (SS-RL3S4)

Connect the parts connected to the meter like the following:



Then, adjust the safety valve to the pressure which is a little lower than the highest pressure the bottle can stand.

Third, connect the left parts according to the picture showed. Pay attention to Part III. It should be connected like this(do not use the O-ring in 1):



Other tips:

1. NEVER use base bath to clean the bottle. The outside of the bottle is not glass, and it will turn black very quickly if there is some base on it. Fortunately, the color change does not mean the bottle is not safe, but you can not see your reaction inside.
2. NEVER screw the needle valve too hard. You may break it inside.
3. Use teflon tape to help avoiding gas leaking.